



LTE ANTENNA

Antenna LTE YAGI 120,
7 dBi, N (m), RG58/5m,
partial bracket

AO-ALTE-YASN5

SECTRON company offers wide portfolio of LTE antennas with various versions differing in shape, level of gain or attachment manner. SECTRON guarantees compatible connection between antenna and all antenna adaptors produced by SECTRON.

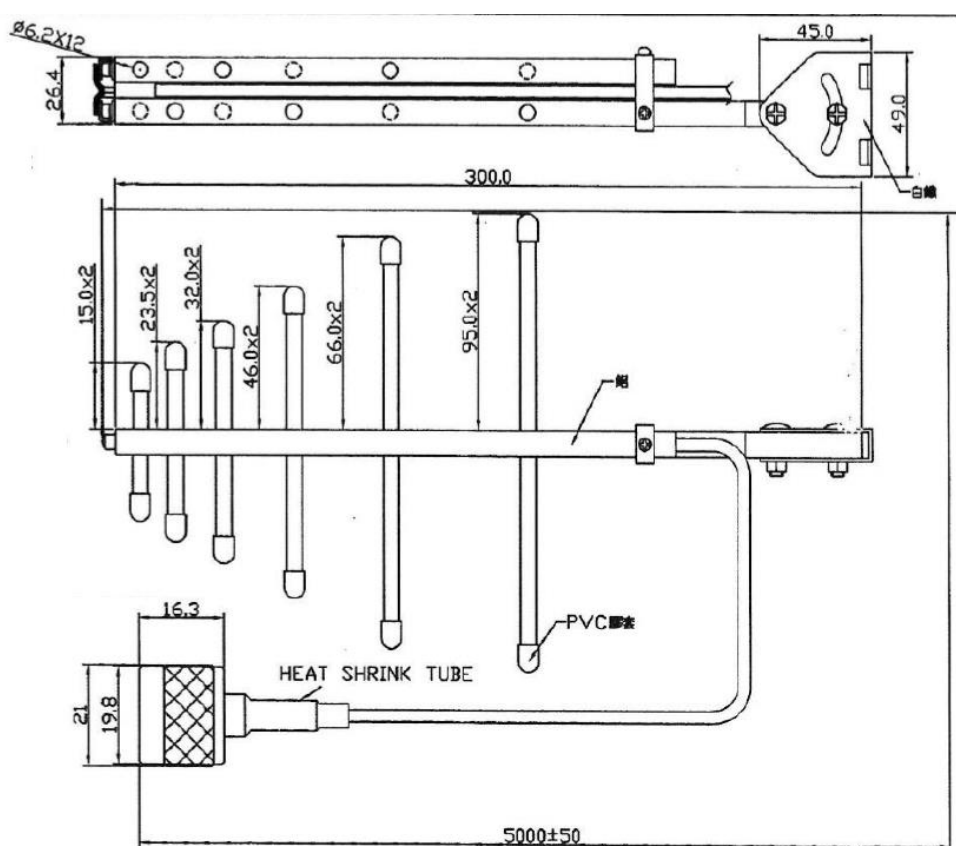


BENEFITS

- Directional - Greater reach
- High gain

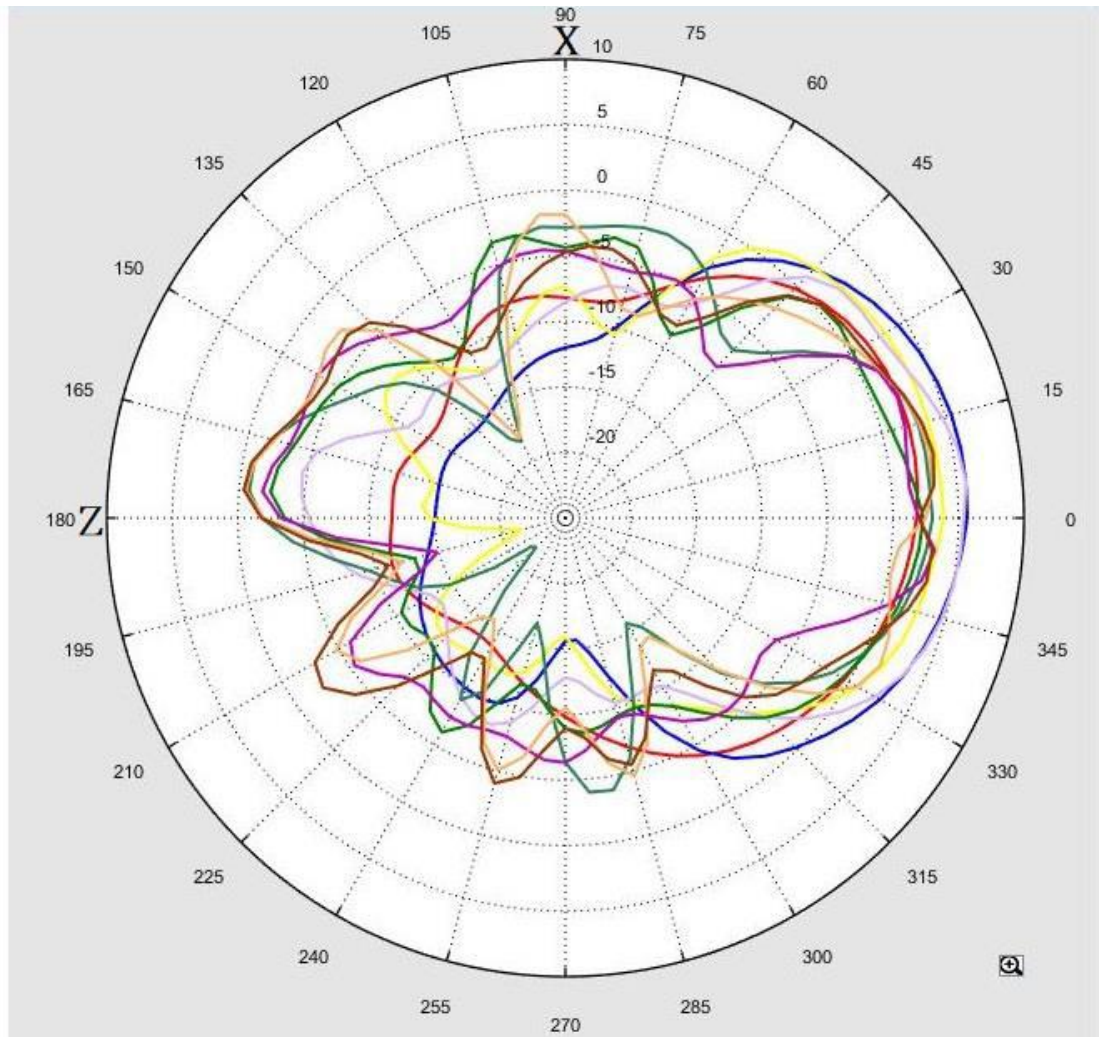
Technology	LTE
Frequency bands	690~2700 MHz
Bandwidth	270 MHz
Gain	7 dBi
VSWR	<2.0:1
Impedance	50 Ohm
Directivity	Directional
Beam angle	Via attached graph below
Polarization	Vertical
Maximum input power	10 W
Power voltage	-
Dimensions	300 x 196 x 26 mm
Weight	505 g
Operating temperature	-30 to +80 °C
Execution	External
Method of attachment	Screw Mount
Cable type	RG58
The cable length	5 m
Connector type	N (m)

DRAWING



RADIATION PATTERN – 2D

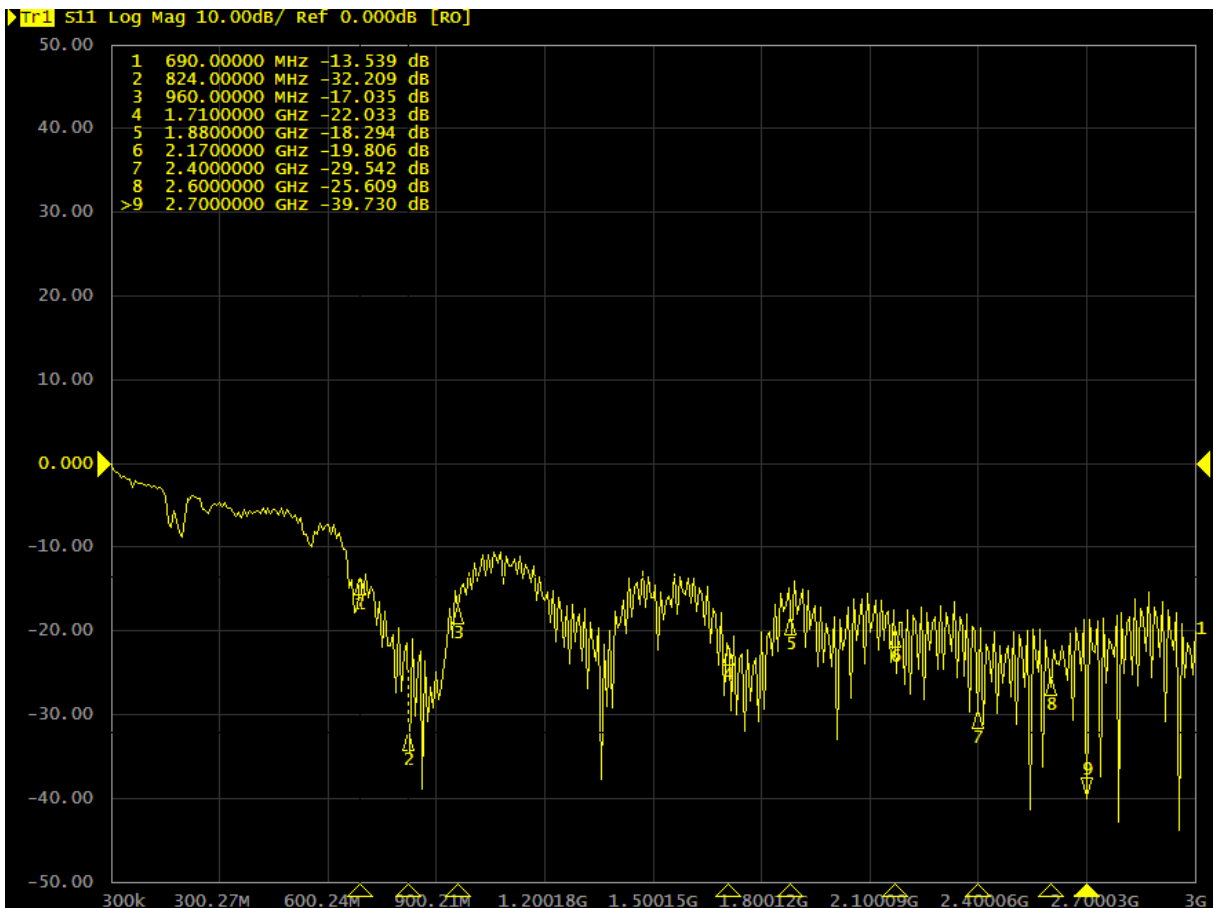
Freq. / Chan.	Color
690MHz	□□□
824MHz	□□□
960MHz	□□□
1.71GHz	□□□
1.88GHz	□□□
2.17GHz	□□□
2.4GHz	□□□
2.6GHz	□□□
2.7GHz	□□□



VSWR- Voltage standing wave ratio [-] LTE



S11- Return loss [dB] LTE



Frequency (MHz)	Return Loss (dB)	VSWR	Efficiency (%)	GAIN (dB)
690	-13.53	1.51	41.59	2.13
824	-32.20	1.06	75.68	6.09
960	-17.03	1.34	62.95	4.5
1710	-22.03	1.16	61.09	5.61
1880	-18.29	1.30	40.18	3.02
2170	-19.80	1.24	41.11	2.64
2400	-29.54	1.08	40.83	2.48
2600	-25.60	1.11	52.48	3.66
2700	-39.73	1.01	47.53	3.18

VARIANTS

AO-AGSM-YASN5

Different connector variants or cable lengths are available on request.

CONTACTS

SECTRON s.r.o. Josefa Šavla 1271/12
709 00 Ostrava 9, Czech Republic

WWW.SECTRON.CZ
Tel.: +420 556 621 020