



LTE/GPS ANTENNA

Antenna LTE/GPS Screw Mount R36, RG174/3m, SMA(m)/SMA(m)

AO-AKOM-36SS

SECTRON company offers a wide portfolio of LTE and GPS antennas with various versions differing in shape, level of gain and manner of attachment. SECTRON guarantees a compatible connection between an antenna and all antenna adaptors produced by SECTRON.

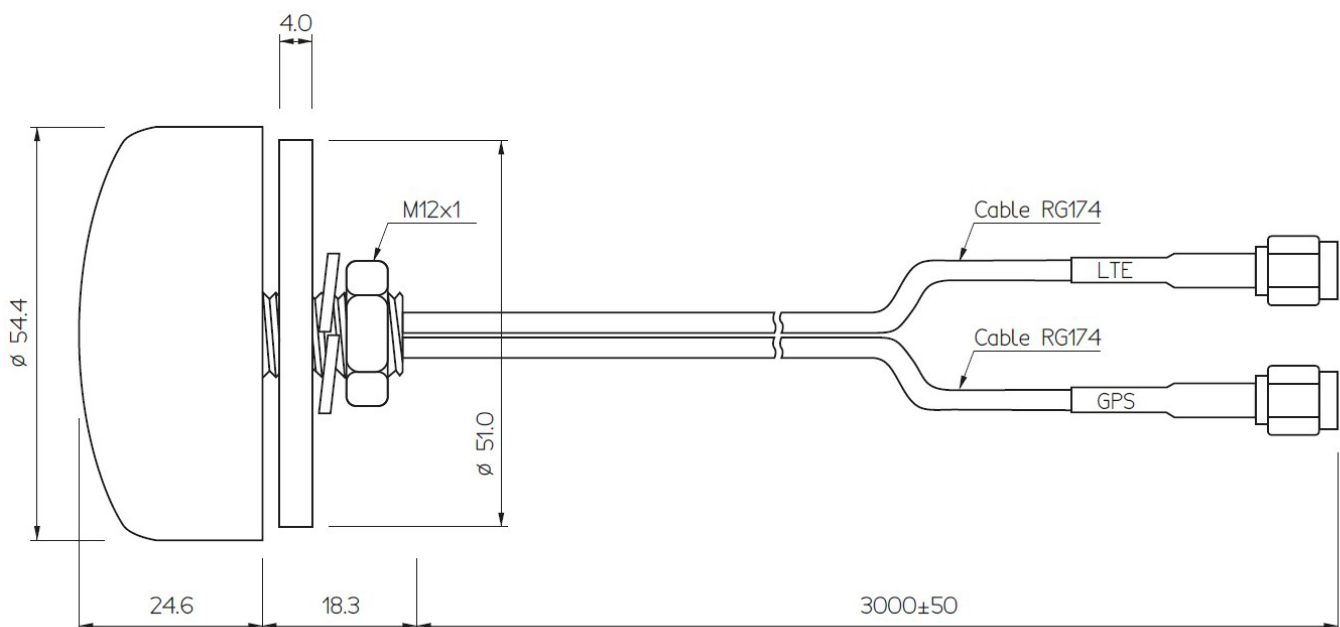


BENEFITS

- Low VSWR
- Easy installation
- High frequency range

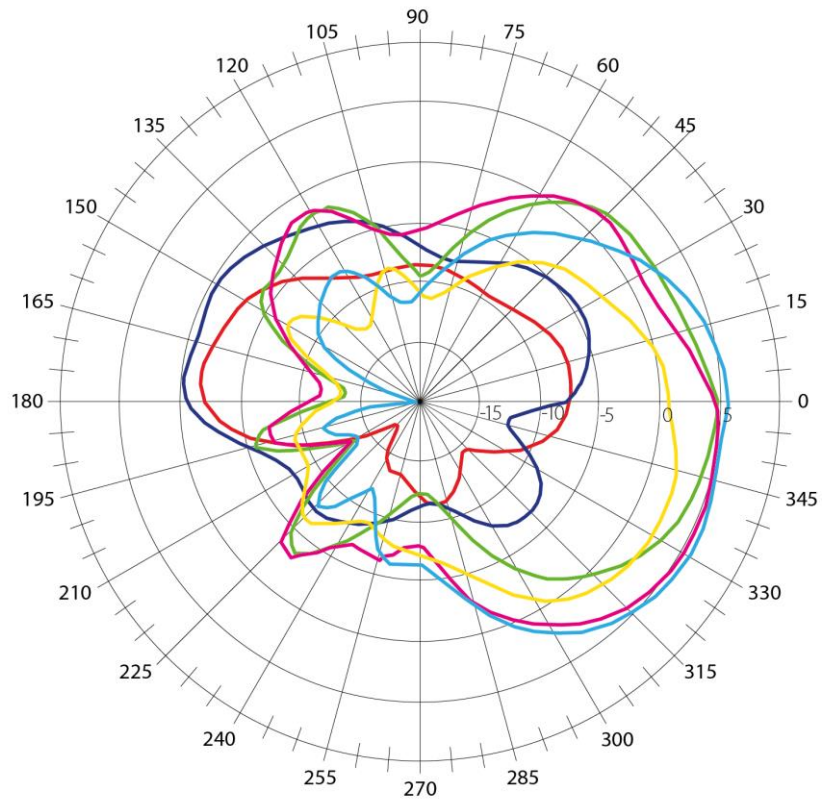
| | |
|-----------------------|--|
| Technology | LTE/GPS |
| Frequency bands | 800/900/1700/1800/1900/2100/2600/2700/1575.42MHz |
| Bandwidth | 1 MHz (GPS)/100 MHz (LTE) |
| Gain | 0 dBi |
| LNA Gain | 27 dB |
| VSWR | <2.0:1 |
| Impedance | 50 Ohm |
| Directivity | Omnidirectional |
| Beam angle | H-360°, V-30° |
| Polarization | Linear/R.H.C.P. |
| Maximum input power | 10 W |
| Power voltage | 2.7 to 5.5 V DC |
| Dimensions | ∅ 54.4 x 28.6 mm |
| Weight | 168.57 g |
| Operating temperature | -30 to +90 °C |
| Execution | External |
| Method of attachment | Screw Mount |
| Cable type | 2 x RG174 |
| The cable length | 2 x 3 m |
| Connector type | SMA(m)/SMA(m) |
| IP code | IP 67 |
| Material | PVC Rubber |

DRAWING



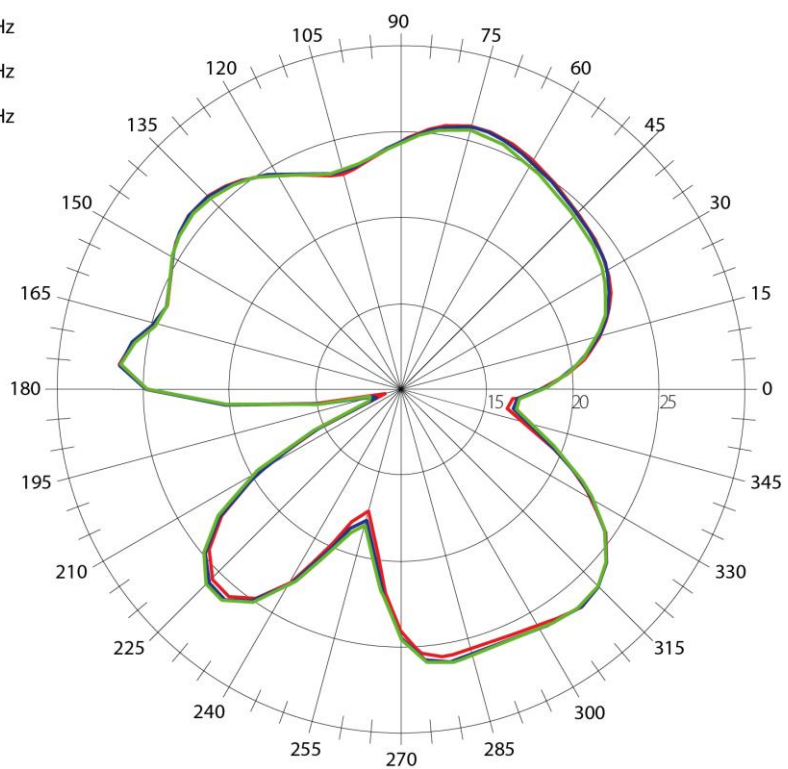
RADIATION PATTERN – 2D LTE Antenna

- 800 MHz
- 900 MHz
- 1.8 GHz
- 1.9 GHz
- 2.1 GHz
- 2.6 GHz

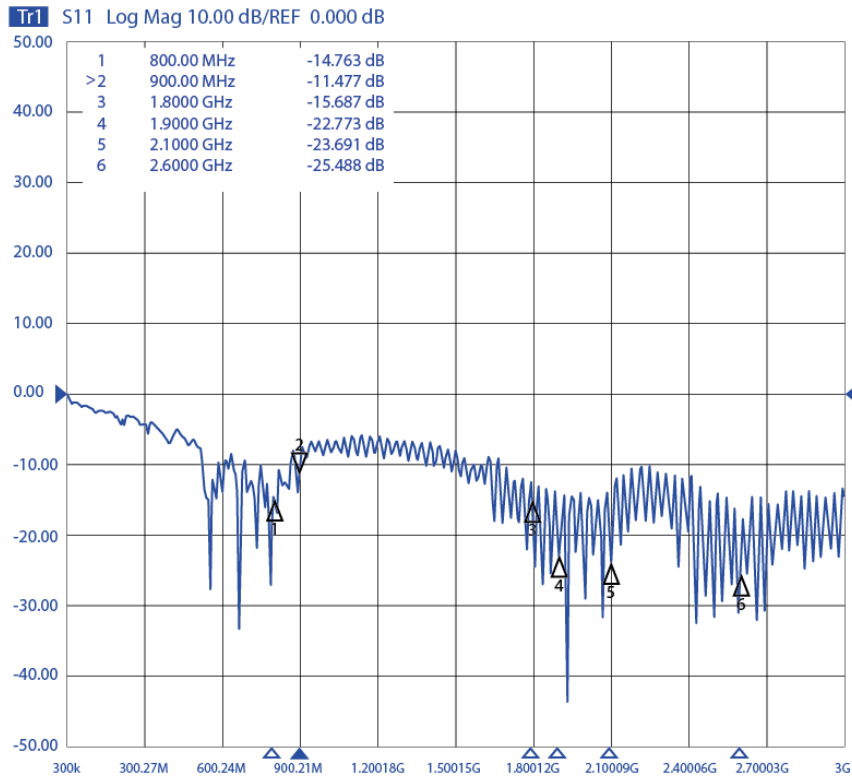


GPS Antenna

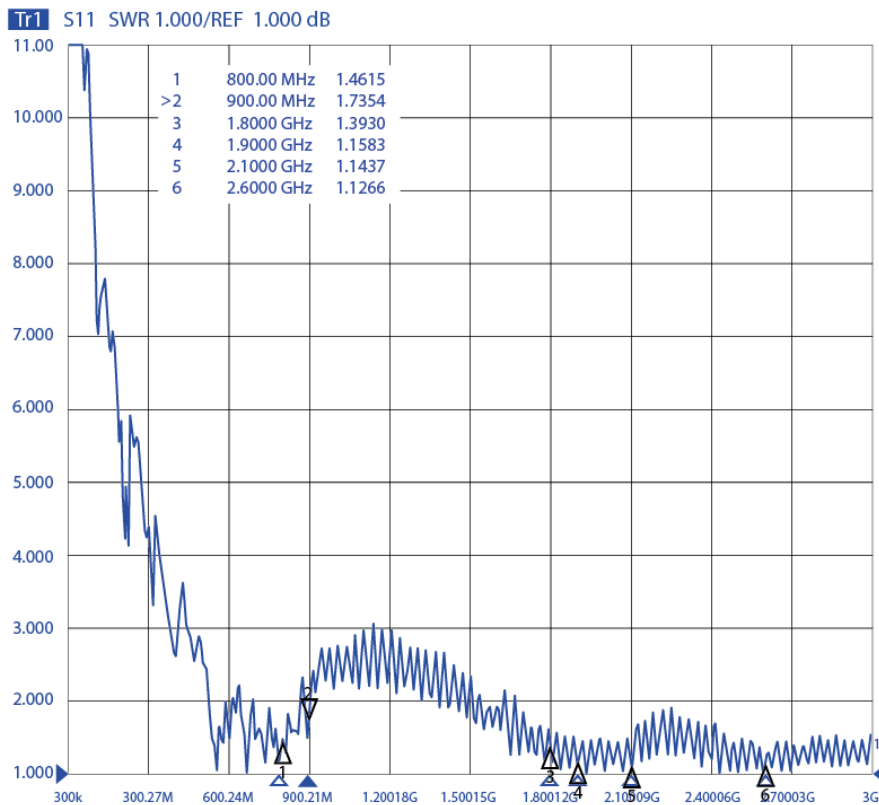
- 1.57442 GHz
- 1.57542 GHz
- 1.57642 GHz



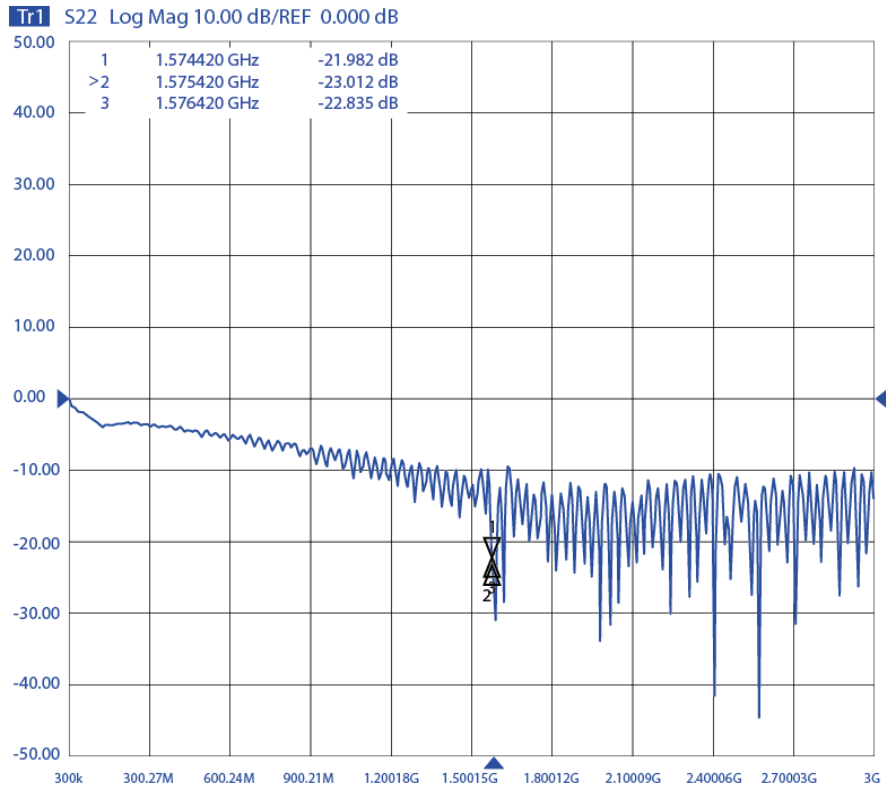
S11 - Return Loss of LTE antenna [dB]



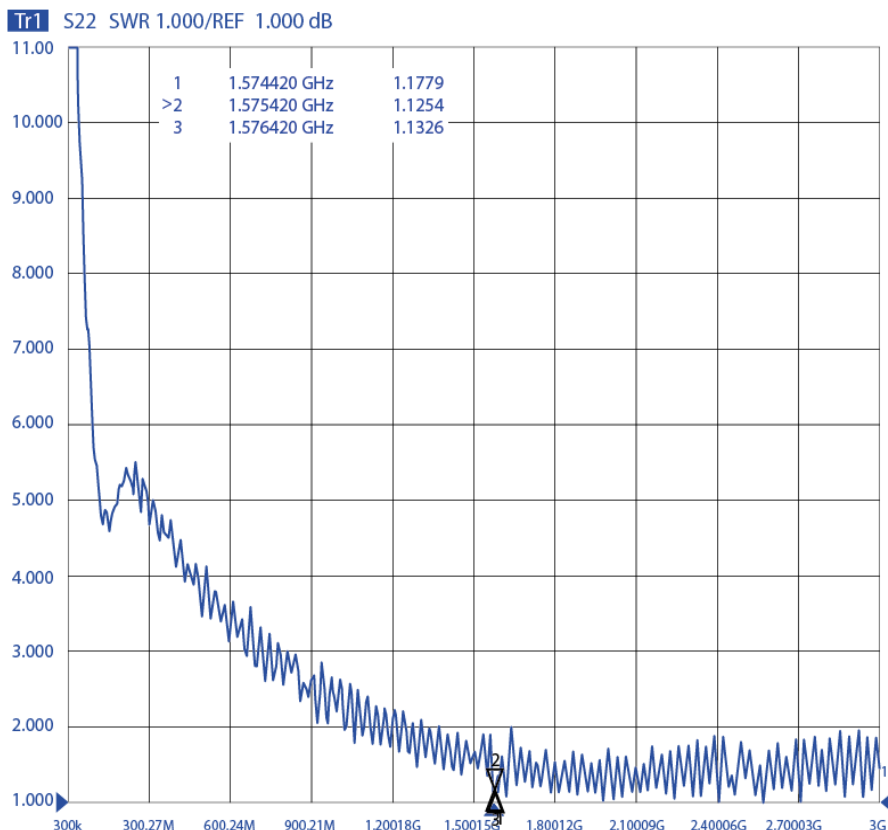
VSWR – Voltage standing wave ratio of LTE antenna [-]



S11 - Return Loss of GPS antenna [dB]



VSWR – Voltage standing wave ratio of GPS antenna [-]



LTE antenna features

| | Gain [dBi] | VSWR [-] | S ₁₁ [dB] |
|---------|------------|----------|----------------------|
| 800 MHz | -2 | 1.4615 | -14.763 |
| 900 MHz | 0 | 1.7354 | -11.477 |
| 1.8 GHz | 5 | 1.3930 | -15.687 |
| 1.9 GHz | 5 | 1.1583 | -22.773 |
| 2.1 GHz | 6 | 1.1437 | -23.691 |
| 2.6 GHz | 3 | 1.1266 | -25.488 |

GPS antenna features

| | Gain [dBi] | VSWR [-] | S ₁₁ [dB] |
|-------------|------------|----------|----------------------|
| 1.57442 GHz | 28 | 1.1779 | -21.982 |
| 1.57542 GHz | 28 | 1.1254 | -23.012 |
| 1.57642 GHz | 28 | 1.1326 | -22.835 |

VARIANTS

Different connector variants or cable lengths are available on request.

CONTACTS

SECTRON s.r.o. Josefa Šavla 1271/12
709 00 Ostrava 9, Czech Republic

WWW.SECTRON.CZ
Tel.: +420 556 621 020