

Antenna Connector Adaptor FME(m) to SMA(f)

AO-FMEM-SMAF

SECTRON company offers a wide portfolio of high-quality handmade cable adaptors in various versions for M2M applications.

Coaxial RF cable connectors are an important part of quality cable adaptors. SECTRON product portfolio includes brand connectors suitable for frequencies up to 6 GHz.



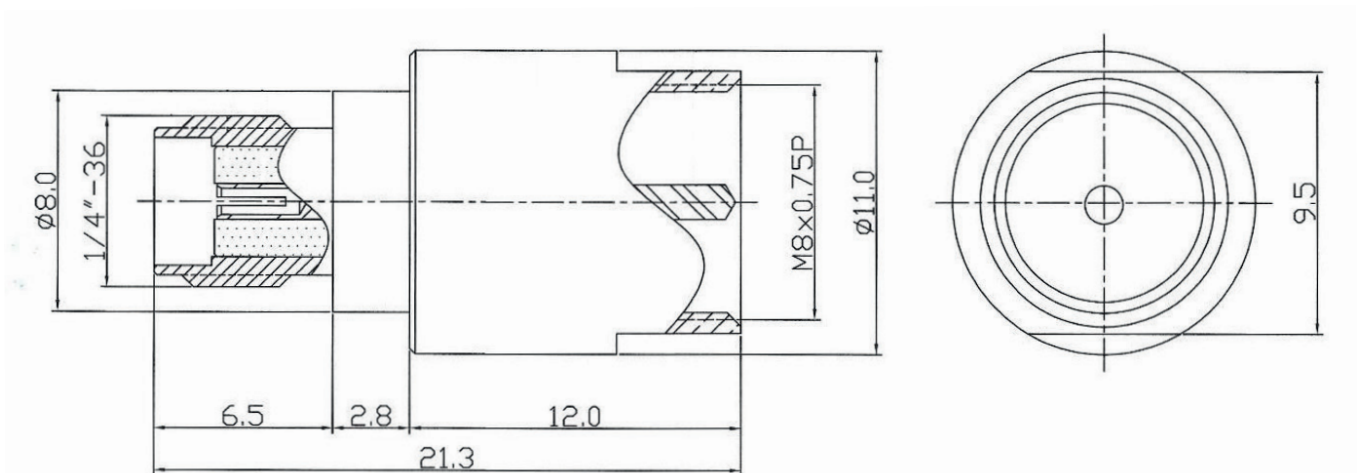
FEATURES

Frequency range	0-6 GHz
Impedance	50 Ohm
Maximum VSWR (6 GHz)	< 1.92:1
Insulation resistance	5000 MOhm min.
Working voltage	355 V _{rms}
Mating cycles	≥500
Operating temperature	-55° C to +155° C
Weight	7.14 g
Certification	RoHS, ISO 9001, ISO 14001

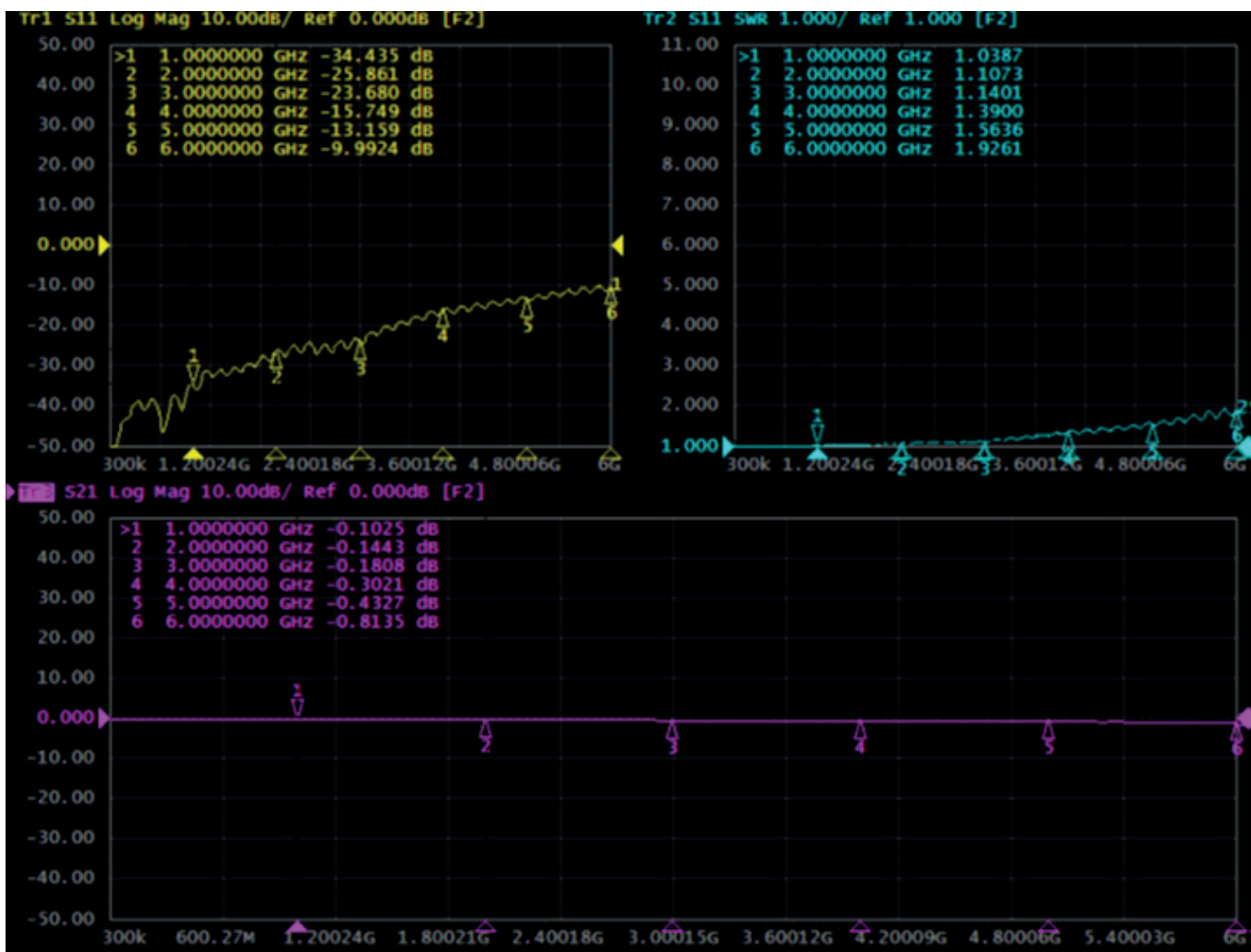
MATERIAL AND FINISH

Body	Nickel / Gold
Center Pin	Phosphor Bronze / Gold
Insulator	PTFE
Center Conductor Retention Range	≥0.28 N
Coupling Nut Retention Range	≥180Nq

DRAWING - ADAPTOR



DIAGRAMS



Frequency (MHz)	VSWR	Insertion Loss (dB)	Return Loss (dB)
1000	1.03	-0.10	-34.43
2000	1.10	-0.14	-25.86
3000	1.14	-0.18	-23.68
4000	1.39	-0.30	-15.74
5000	1.56	-0.43	-13.15
6000	1.92	-0.81	-9.99

