



ISM ANTENNA

Antenna ISM OMNI OM60,
868/915 MHz, 2.5 dBi, SMA(m),
Cable MR-195/3m

AO-A868-OM60

SECTRON company offers wide portfolio different antennas with various versions differing in shape, level of gain or attachment manner. SECTRON guarantees compatible connection between antenna and all antenna adaptors produced by SECTRON.

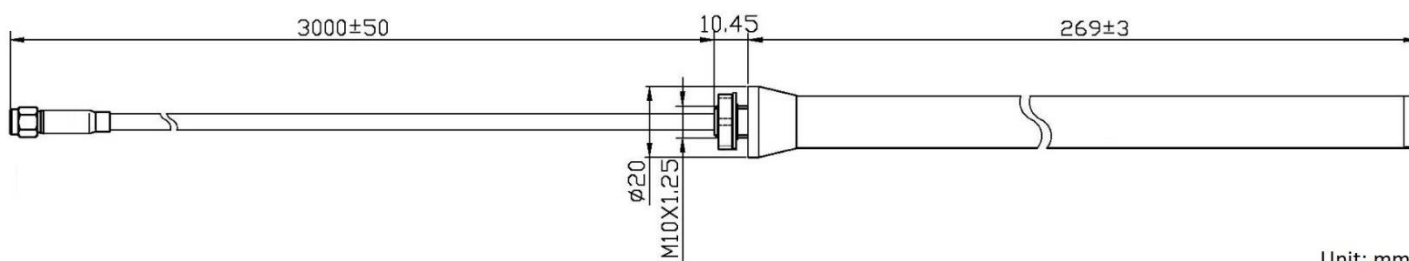
BENEFITS

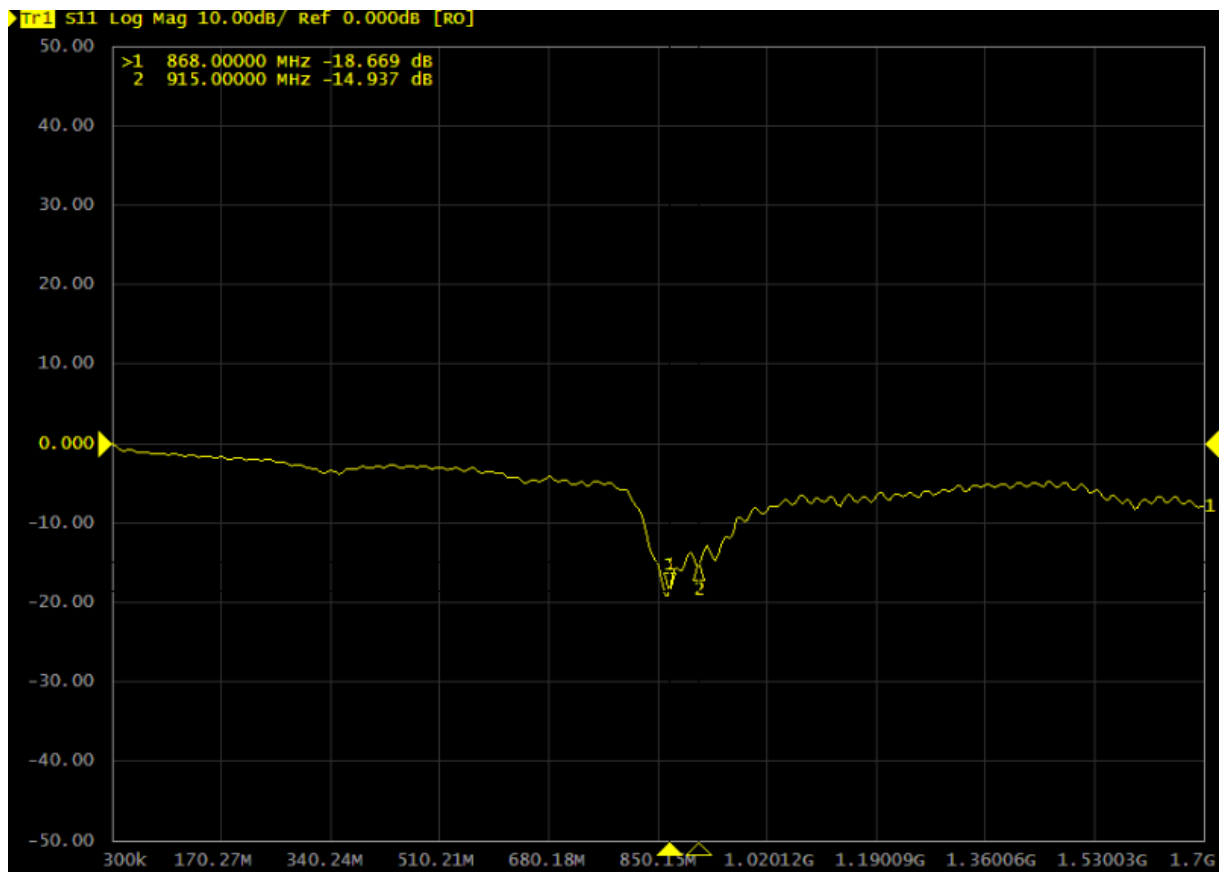
- Easy installation
- Low VSWR
- High quality low loss cable



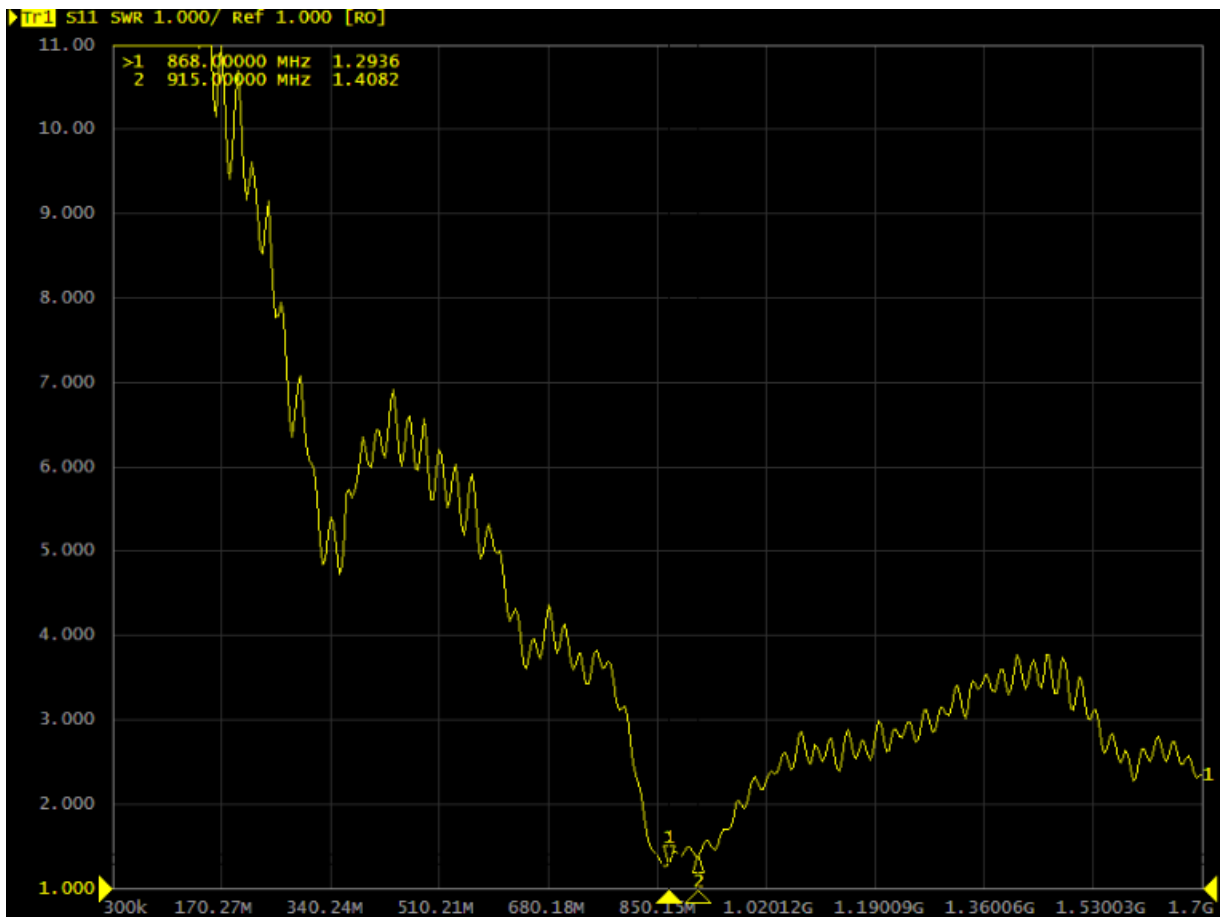
Technology	ISM
Frequency bands	868/915 MHz
Bandwidth	-
Gain	2.5 dBi
VSWR	<1.4:1
Impedance	50 Ohm
Directivity	Omnidirectional
Beam angle	Attached graphs below
Polarization	Linear
Maximum input power	50 W
Power voltage	-
Dimensions	279.45 x Ø 20 mm
Weight	750 g
Operating temperature	-40 to +60 °C
Execution	External
Method of attachment	Mounting
Cable type	.195
The cable length	3 m
Connector type	SMA(m)
IP code	IP67
Certification	RoHS

DRAWING

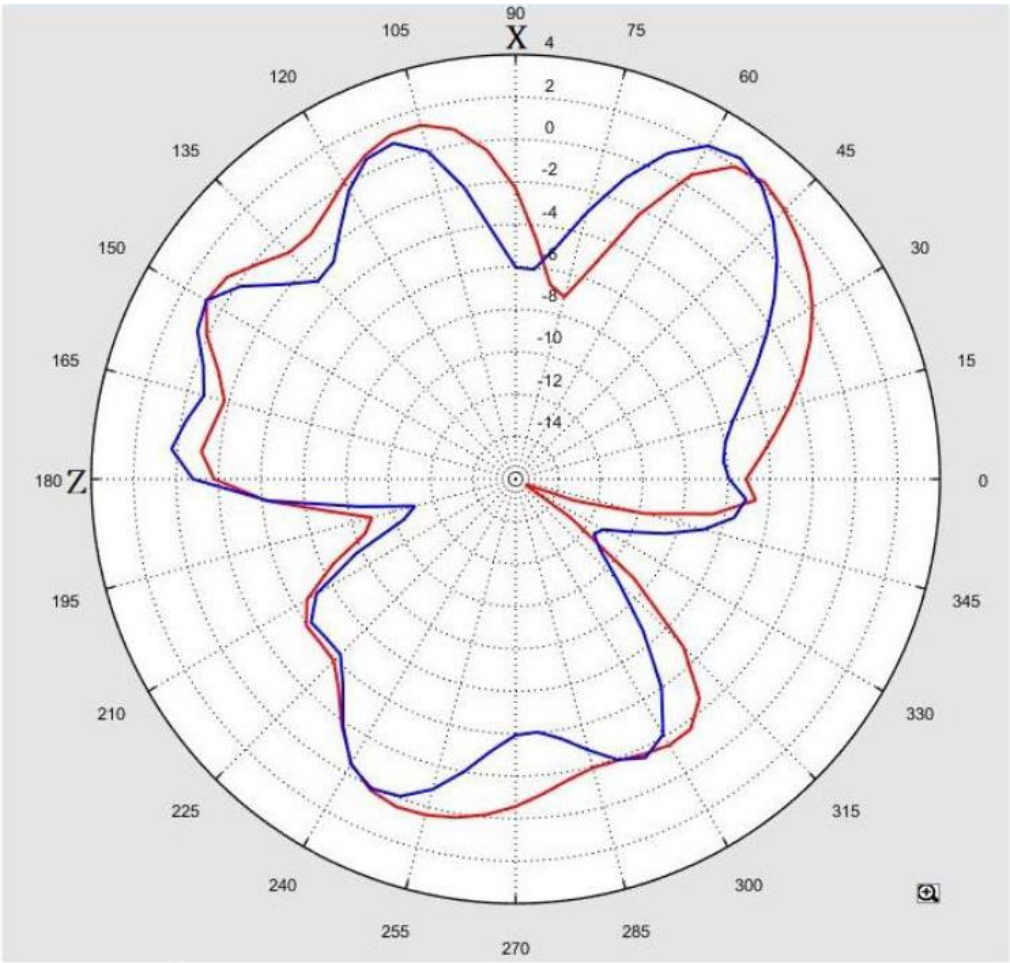


S_{11} [dB] – Return loss

VSWR – Voltage standing wave ratio



Freq. / Chan.	Color
868MHz	Red
915MHz	Blue



TEST REPORT:

Frequency [MHz]	Return Loss [dB]	VSWR	Efficiency [%]	GAIN [dBi]
868	-18.66	1.29	82.41	2.19
915	-14.93	1.40	73.96	2.43

VARIANTS

AO-A868-OM60

Different connector variants or cable lengths are available on request.

CONTACTS

SECTRON s.r.o. Josefa Šavla 1271/12
709 00 Ostrava 9, Czech Republic

WWW.SECTRON.CZ
Tel.: +420 556 621 020